



naturally curious

2018-2019
Educational Activities



Activities
without
additional fees!



espace
pour la
vie montréal



TABLE OF CONTENTS

Tools to Make Your Job Easier	4
Don't Miss These Great Activities!.....	8
Educational Activities for Students.....	10 to 25
Preschool - Daycare and Kindergarten.....	10
Elementary Cycle 1.....	13
Elementary Cycle 2.....	18
Elementary Cycle 3.....	21
Secondary.....	24
Specialized Activities	26
Teaching Tools.....	27
Reservation Conditions	28
Rates.....	28
Reservation Form.....	29
General Information.....	30
Experiment on Plants' Super Powers.....	15
Summary Table	16



TOOLS TO MAKE YOUR JOB EASIER

A **PORTAL**
WHERE YOU CAN EASILY FIND
THE INFORMATION YOU NEED



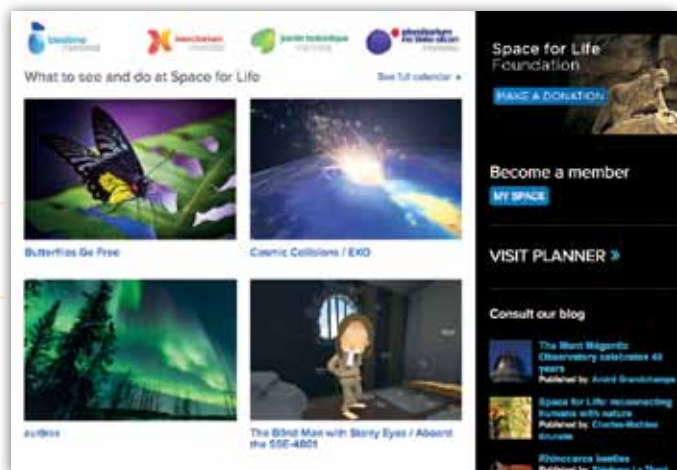
A **SEARCH ENGINE**
FOR EDUCATIONAL ACTIVITIES



CONTENT
TO PIQUE YOUR CURIOSITY



ALL DETAILS ON
WHAT TO SEE AND DO



EDUCATIONAL TOOLS TO PREPARE YOUR VISIT



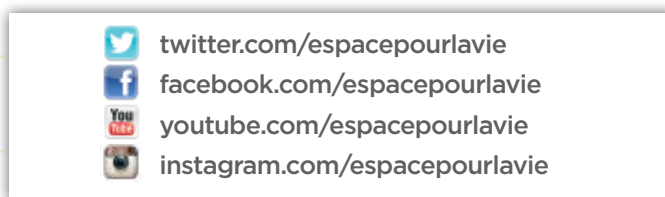
ARTICLES BY OUR EXPERTS ON CURRENT EVENTS, SCIENCE, THE ENVIRONMENT AND CITIZEN INITIATIVES espacepouurlavie.ca/blogue/en



A SCHOOL NEWSLETTER



SOCIAL MEDIA TO HELP YOU STAY IN TOUCH



SPACE FOR LIFE

Once again this year, our teams have concocted a fabulous line-up of educational activities for you and your class. We're delighted to be able to offer you such a wide choice of activities, easily accessible at montrealspaceforlife.ca.

You'll be able to gather the information you need, answer your students' questions, get ready for a school outing and even host an in-class workshop while the Biodôme is closed.

Our mission is to connect humankind with nature. You can help by sharing this content with your students!

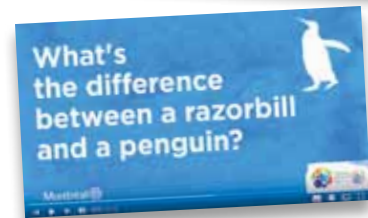


The **BIODÔME** may be closed, but here are **THREE** ways to stay in contact, thanks to content developed especially for you:

1 Our enthusiastic educators will come to your school* to run **IN-CLASS WORKSHOPS**.

2 Watch our short, educational and super-fun **VIDEOS** on YouTube!
<http://bit.ly/ClipsEspacepourlavie>

3 Check out the **FACT SHEETS** ON THE ANIMALS AND PLANTS OF THE AMERICAS on our website:
espacepourlavie.ca/en/further-reading



*Montréal Island only

BIODÔME MIGRATION

Starting in December 2019, Biodôme will be offering a new visitor experience in its five ecosystems. Watch the project take shape at montrealspaceforlife.ca.

The INSECTARIUM is getting ready for a complete metamorphosis and will be closing in March 2019. Enjoy it now!

1 VISITOR ACTIVITIES ALL FALL

2 BUTTERFLIES GO FREE February 28 to April 28

Enjoy some magical moments in the heart of a greenhouse, surrounded by thousands of butterflies! Open your eyes wide and delight in this experience.



3 MISSION MONARCH

Monarch butterflies are endangered more than ever. But you and your students can do something about it! Join the *Mission Monarch* research project, a fun way to help save the queen of butterflies. Plan school outings to look for monarchs and their host plant, milkweed.

You can find all the details on:

espacepurlavie.ca/en/mission-monarch



INSECTARIUM METAMORPHOSIS

The Insectarium will be closing in March 2019, and an all-new museum will open its doors in winter 2021. Get ready to see the world as insects do!

DON'T MISS THESE GREAT ACTIVITIES!

**DON'T MISS THE
NEW PROGRAMMING AT
PLANÉTIARIUM RIO TINTO ALCAN
RIGHT HERE!**

Biodôme

NEW!
TRACKING ANIMALS

**BECOME AN ECO-CITIZEN BY
PROTECTING THE ST. LAWRENCE**

**BIODIVERSITY IN YOUR
NEIGHBOURHOOD**

(pages 13, 18 and 21)

*In-class workshops - All elementary
cycles*

While the Biodôme is closed, it will be offering 3 in-class workshops: *Tracking Animals* for elementary cycle 1, *Become an Eco-Citizen by Protecting the St. Lawrence* and *Biodiversity in Your Neighbourhood* for elementary cycles 2 and 3.

Offered on Montréal Island only.

Insectarium

**BUG BITES
BUTTERFLIES GO FREE**

(page 10)

Activity - All cycles

Visit a greenhouse full of tropical butterflies and moths to learn about some of the behaviour of these fascinating insects. These short presentations are sure to catch your students' attention and spark their curiosity.

**FOR
HALLOWEEN**



TRICKY SPIDERS

(page 10)

Activity - All cycles

Spiders are great hunters with lots of tempting ways. Just try to resist their charms...

Jardin botanique

**FOR
HALLOWEEN**



POUAH! BÉBÉ-SORCIÈRE

(page 11)

*Storytelling time - Preschool and
elementary cycle 1 and grade 3
(ages 5-8)*

Come learn how baby witches and baby pumpkins are different and alike, in our storytelling session.

IN FRENCH ONLY.

TREES UP CLOSE

(page 14)

Activity - Elementary cycle 1

*Also offered for reception classes and
groups with students with learning
difficulties or mild intellectual disabilities*

Here, students will learn all about trees, their needs and the important role they play for animals. Magnifying glasses in hand, the budding naturalists will identify, observe and discover different structures of deciduous and coniferous trees. A great way to make learning fun!

GRAINES • SEEDS • SEMILLAS • 种子

(page 13)

Activity - Elementary cycle 1

This workshop offers a look at seeds from near and far. Take a trip around the world to find out where the seeds we eat come from. Examine a mung bean under a microscope for a close-up look at its tiny parts.

The activity continues with a visit to the Tropical Food Plants greenhouse. Cocoa and coffee beans and coconuts have one thing in common - they're absolutely delicious seeds! Have fun looking for the plants that produce them.

Planétarium Rio Tinto Alcan

NEW!

**THE BLIND MAN WITH STARRY
EYES**

(page 12)

*Show - Preschool and elementary
cycle 1*

An ambitious tyrant asks a wise old man in his kingdom how he can become even more powerful. Although he insists, he can only elicit one answer: "Look at the sky and count the stars." When he realizes the old man will not give him more clues, the tyrant follows his advice and starts counting the stars in the sky. Gradually, they forge a relationship that changes the tyrant's quest for domination into a quest for knowledge.

NEW!

ABOARD THE SSE-4801

(page 12)

*Show - Preschool and elementary
cycle 1*

Why is the sky blue? Where do stars hide during the day? Are there only stars and the Moon in the sky? To find out, hop on board SSE-4801 to discover what hides in the outer reaches of our celestial neighbourhood: the Solar System. Guided by our spirited host, you'll soar in orbit for an incredible journey, somewhere between the Sun and Neptune; exploring the eight planets, new moons, and an asteroid field. You'll also meet a cute and mysterious little comet. Ready for take-off? Let the adventure begin!

Original score: Les Petites Tounes



**DON'T MISS THE
NEW PROGRAMMING AT
PLANÉTIARIUM RIO TINTO ALCAN
RIGHT HERE!**

DON'T MISS THESE GREAT ACTIVITIES!

NEW!

THE SECRETS OF GRAVITY

(page 14)

Show - Elementary cycles 1, 2 and 3 and secondary

Why do things fall to the ground without magic?

The young magician's apprentice LIMBRADUR is far more interested in the Universe and its secrets than magic spells. He's fascinated by the stars, the Universe and the laws of nature. So, one night he sneaks into the Albert Einstein Museum, where he meets ALBY X3, a small, clever but rather quirky robot who knows all about Albert Einstein and his theories. ALBY takes LIMBRADUR on a magical journey of discovery through time and space, during which they not only uncover the secrets of gravity but also learn much about friendship and imagination. For LIMBRADUR and ALBY both have secrets of their own.

NEW!

COSMIC COLLISIONS

(page 20)

Show - Elementary cycles 1, 2 and 3 and secondary

A radical change from our peaceful night sky, *Cosmic Collisions* presents the spectacular result of gravity pulling together planets, stars, and galaxies. These sometimes explosive encounters may have not only ended the age of the dinosaurs but also given birth to new stars, essential for life on Earth.

Cosmic Collisions will provide an extraordinary view of the forces - constructive or catastrophic - that continue to shape our Universe.

NEW!

PLANET 9

(page 23)

Show - Elementary cycles 1, 2 and 3 and secondary

Since Pluto was downgraded to a dwarf planet, this object on the outskirts of our solar system has continued to fascinate astronomers. The New Horizons probe flyby in 2015 revealed a world far more complex than anyone had expected and offered a new perspective on other objects near Pluto, in the Kuiper belt.

The study of these objects with such magical names - Eris, Sedna, Haumea and many more - suggests that there may be a new planet hidden beyond the Kuiper belt.

NEW!

SCIENCE EXPOSED

Exhibition - All cycles

A picture is worth a thousand words, especially when it comes to science. In collaboration with Acfas - the Association francophone pour le savoir - Space for Life is paying tribute to the nature within which we dwell, by exhibiting some twenty photographs selected by the 2018 contest jury from all the images from scientific research in Quebec. Bring your class and admire nature's beauty through the eye of researchers. Some spectacular images await you!

Location: Planétarium Rio Tinto Alcan
Date: Offered until January 27
Cost: Free admission

In collaboration with



Association francophone
pour le savoir
Acfas

5TH ANNIVERSARY SPECIAL

AURŌRAE

(page 25)

Show - Elementary cycles 1, 2 and 3 and secondary

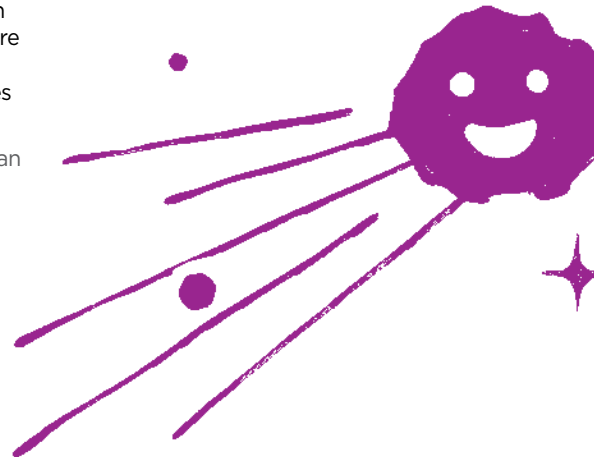
From Montréal to Yellowknife, from outer space to the Earth's core, *aurōrae* explains and transcends the wonderfully inspiring and electrifying aurora borealis, the Northern Lights. Guided by an enthusiastic expert, come delight in an exceptional immersive experience beneath the spectacular dome at the Planétarium Rio Tinto Alcan.

CONTINUUM

(page 25)

Show - Elementary cycles 1, 2 and 3 and secondary

From the infinitely small to the infinitely large, a cosmic poem on the connection between humankind and the Universe. A breathtaking show designed by a pair of internationally acclaimed Montréal artists, Michel Lemieux and Victor Pilon, set to the entrancing symphonic music of Philip Glass.



Insectarium

POP CAPSULES

Activity

Also offered for elementary and secondary

Watch closely – some surprising characters who are passionate about insects will be popping up in the exhibition to share some well-guarded secrets with you! IN FRENCH ONLY

Length: 10 minutes

Location: *We Are the Insects* exhibition

Dates: September 4 to October 3 & November 1 to 4

Schedule: 11:30 a.m. & 2 p.m.

[NO RESERVATIONS REQUIRED]

SUPER INSECTS ON TOUR

Activity

Also offered for elementary and secondary

Come meet some insect superheroes and give them a friendly “leg shake”!

Length: 20 minutes

Location: *We Are the Insects* exhibition

Dates: September 4 to October 3 & November 1 to 4

Schedule: 10 a.m., 1:30 & 4 p.m.

[NO RESERVATIONS REQUIRED]

NATURALLY WELL MADE

Activity

Also offered for elementary and secondary

There's no doubt about it: Insects are marvellously designed machines, perfectly adapted to their environment. Come admire some of the tricks that make them inspiring models of efficiency we could learn from!

Length: 15 minutes

Location: Patte-à-patte room

Dates: September 4 to October 3 & November 1 to 4

Schedule: 2:30 p.m.

[NO RESERVATIONS REQUIRED]

BUG BITES BUTTERFLIES GO FREE

Activity

Also offered for elementary and secondary

Visit a greenhouse full of tropical butterflies and moths to learn about some of the behaviour of these fascinating insects. These short presentations are sure to catch your students' attention and spark their curiosity.

Length: 10 minutes

Location: Main Exhibition Greenhouse at the Jardin botanique

Dates: February 21 to April 28
Schedule: 10 & 11 a.m., noon & 1, 2, 3 & 4 p.m.

[NO RESERVATIONS REQUIRED]

FOR HALLOWEEN



TRICKY SPIDERS

Activity

Also offered for elementary and secondary

Spiders are great hunters with lots of tempting ways. Just try to resist their charms...

Length: 15 minutes

Location: Patte-à-patte room

Dates: October 4 to 31

Schedule: 2:30 p.m.

[NO RESERVATIONS REQUIRED]

HALLOWEEN STARS

Activity

Also offered for elementary and secondary

Go ahead and touch them! Spiders and their cousins are waiting for you to give them a friendly “leg shake.” You're sure to find them very docile and totally irresistible.

Length: 20 minutes

Location: *We Are the Insects* exhibition

Dates: October 4 to 31

Schedule: 10 a.m., 1:30 & 4 p.m.

[NO RESERVATIONS REQUIRED]

POP CAPSULES

Activity

Also offered for elementary and secondary

Ready for a surprising encounter? Our famous adventurer, back for Halloween, is looking forward to sharing his amazing discoveries all about spiders with you. IN FRENCH ONLY

Length: 10 minutes

Location: *We Are the Insects* exhibition

Dates: October 4 to 31

Schedule: 11:30 a.m. & 2 p.m.

[NO RESERVATIONS REQUIRED]



Jardin botanique

FOR HALLOWEEN

POUAH! BÉBÉ-SORCIÈRE

Storytelling time

Also offered for elementary cycle 1 and grade 3 (ages 5–8)

Baby witches in Monsterland are lucky. They not only get bottles of toad spit, but take their baths in snake eye juice. YUCK! And what about baby squash? Are they like baby witches? Do they have warts? Come learn how baby witches and baby pumpkins are different and alike, in our storytelling session. IN FRENCH ONLY

Text by Lucie Papineau, illustrations by Steve Beshwaty, staged by Samsara Théâtre.

Offered in co-operation with the Friends of the Montréal Botanical Garden

Length: 30 minutes

Location: Auditorium

Dates: October 5 to 31

Schedule: 1 to 4 shows a day; see our website for times

[GROUPS: RESERVATIONS REQUIRED]



GREAT PUMPKIN BALL EXHIBITION

Exhibition

Also offered for elementary

Your class can visit the exhibition and enter the pumpkin-decorating contest. Guaranteed fun and cash prizes to be won. Contest rules available on our website.

Location: Main Exhibition Greenhouse

Dates: October 5 to 31

Schedule: 9 a.m. to 9 p.m.

Contest deadline: October 14, 7 p.m.

[NO RESERVATIONS REQUIRED]

ESMERALDA, THE FRIENDLY WITCH

Activity

Also offered for elementary cycle 1 and grade 3 (ages 4–8)

There's a very strange house hiding in a greenhouse full of pumpkins at the Jardin botanique.

A friendly witch and lots of small wild creatures make perfect, inseparable roommates there. This half-plant, half-animal structure was designed by some wacky architects. Who built all those hidey-holes? And who lives there with Esmeralda, the witch? Come meet her and find out.

Location: Main Exhibition Greenhouse

Dates: October 5 to 31

Schedule: 9:30 a.m. to 8:30 p.m.

[NO RESERVATIONS REQUIRED]



PRESCHOOL — Daycare & Kindergarten

**DON'T MISS THE
NEW PROGRAMMING AT
PLANÉTIARIUM RIO TINTO ALCAN
RIGHT HERE!**

USING ALL YOUR SENSES TO DISCOVER PLANTS

Activity

Kindergarten, ages 5-6

Also offered for students with intellectual disabilities and reception classes

Have fun using all your senses to learn about plants: their spectacular looks, their heady scents, their surprising textures, their exquisite tastes and even their intriguing sounds! The activity starts with a fun look at the senses and the plant world and continues with a tour of the greenhouses, where you'll see a trunk whose base is bigger than an elephant's foot, leaves that are spotted like a cheetah... an eyeeful of shapes and colours!

Length: 75 minutes

Capacity: 2 classes

Location: Multipurpose rooms and greenhouses

Dates: March 13 to June 7

Schedule: 9:30 a.m. & 12:30 p.m.

[RESERVATIONS REQUIRED]



Frédéric Back Tree Pavilion

Most activities take place indoors. For some activities, however, we may take the students outdoors into the Arboretum. So it's important for the children to be dressed appropriately for the weather (boots, raingear, gloves, etc.). That way everyone is sure to enjoy the outing.

COMBINE an educational activity of your choice with the complementary *Our Friends, the Birds* activity. Ask when you reserve.

OUR FRIENDS, THE BIRDS

Activity

Preschool, kindergarten, ages 4-5 only

Also offered for elementary cycles 1 and 2, reception classes and groups with students with learning difficulties or mild intellectual disabilities

Your students will head off in teams in search of bird beaks and feet and to discover some surprising adaptations, play birdsong bingo and learn to recognize a black-capped chickadee's call. They'll have a great time with all these observation, demonstration and hands-on activities that will turn them into budding ornithologists!

Length: 45 minutes

Capacity: 1 class

Location: Frédéric Back Tree Pavilion

Dates: October 3 to 31

& May 15 to June 7

Schedule: 9:30 & 10:30 a.m.,

Wednesday to Friday

From May 15 to June 7,

the activity will also be

offered at 12:30 p.m.

[RESERVATIONS REQUIRED]

Planétarium Rio Tinto Alcan

NEW!

THE BLIND MAN WITH STARRY EYES

Show

Also offered for elementary cycle 1

An ambitious tyrant asks a wise old man in his kingdom how he can become even more powerful. Although he insists, he can only elicit one answer: "Look at the sky and count the stars." When he realizes the old man will not give him more clues, the tyrant follows his advice and starts counting the stars in the sky. Gradually, they forge a relationship that changes the tyrant's quest for domination into a quest for knowledge.

Length: 23 minutes

Dates: September 4 to June 21

Schedule: Contact our Group reservations department at 514 868-3000

Presented as a double feature with *Aboard the SSE-4801*

[RESERVATIONS REQUIRED]

NEW!

ABOARD THE SSE-4801

Show

Also offered for elementary cycle 1

Why is the sky blue? Where do stars hide during the day? Are there only stars and the Moon in the sky?

To find out, hop on board SSE-4801 to discover what hides in the outer reaches of our celestial neighbourhood: the Solar System. Guided by our spirited host, you'll soar in orbit for an incredible journey, somewhere between the Sun and Neptune; exploring the eight planets, new moons, and an asteroid field. You'll also meet a cute and mysterious little comet. Ready for take-off? Let the adventure begin!

Original score: Les Petites Tounes

Length: 40 minutes

Dates: September 4 to June 21

Schedule: Contact our Group reservations department at 514 868-3000

Presented as a double feature with *The Blind Man with Starry Eyes*

[RESERVATIONS REQUIRED]



ELEMENTARY CYCLE 1 – Grades 1 & 2

Biodôme

NEW!

TRACKING ANIMALS

In-class workshop

Your students will join a nature enthusiast and literally track some animals! The young explorers will follow tracks and other clues and learn about the denizens of the Laurentian maple forest.

Length: 60 minutes
Capacity: two classes per school
Dates: September 17 to October 26,
February 4 to 22,
& May 6 to June 7
Schedule: one class in the morning,
the other in the afternoon
Cost: \$325 for 2 classes per
school

Offered on Montréal Island only.

[RESERVATIONS REQUIRED]



Insectarium

POP CAPSULES

Activity

See description, page 10

Dates: September 4 to October 3
& November 1 to 4

SUPER INSECTS ON TOUR

Activity

See description, page 10

Dates: September 4 to October 3
& November 1 to 4

NATURALLY WELL MADE

Activity

See description, page 10

Dates: September 4 to October 3
& November 1 to 4

BUG BITES

BUTTERFLIES GO FREE

Activity

See description, page 10

Dates: February 21 to April 28

FOR HALLOWEEN



Don't miss our captivating presentations on spiders:

TRICKY SPIDERS HALLOWEEN STARS POP CAPSULES

Activities

See descriptions, page 10

Dates: October 4 to 31

Jardin botanique

FOR

HALLOWEEN



POUAH! BÉBÉ-SORCIÈRE GREAT PUMPKIN BALL EXHIBITION ESMERALDA, THE FRIENDLY WITCH

Storytelling time - Exhibition - Activity

See descriptions, page 11

Dates: October 5 to 31

THE VEGETABLE GARDEN REVISITED

Activity

*Offered for grade 1 and for students
with intellectual disabilities*

See description, page 26

Dates: March 13 to June 7

GRAINES • SEEDS • SEMILLAS • 种子

Activity

Also offered for reception classes

This workshop offers a look at seeds from near and far. Take a trip around the world to find out where the seeds we eat come from. Examine a mung bean under a microscope for a close-up look at its tiny parts.

The activity continues with a visit to the Tropical Food Plants greenhouse. Cocoa and coffee beans and coconuts have one thing in common - they're absolutely delicious seeds! Have fun looking for the plants that produce them.

Length: 90 minutes

Capacity: 2 classes

Location: Multipurpose rooms
and greenhouses

Dates: March 13 to June 7

Schedule: 9:30 a.m. & 12:30 p.m.

[RESERVATIONS REQUIRED]



ELEMENTARY CYCLE 1 — Grades 1 & 2

Frédéric Back Tree Pavilion

Most activities take place indoors. For some activities, however, we may take the students outdoors into the Arboretum. So it's important for the children to be dressed appropriately for the weather (boots, raingear, gloves, etc.). That way everyone is sure to enjoy the outing.

COMBINE an educational activity of your choice with the complementary *Our Friends, the Birds* activity. Ask when you reserve.

TREES UP CLOSE

Activity

Also offered for reception classes and groups with students with learning difficulties or mild intellectual disabilities

Here, students will learn all about trees, their needs and the important role they play for animals. Magnifying glasses in hand, the budding naturalists will identify, observe and discover different structures of deciduous and coniferous trees. A great way to make learning fun!

Length: 60 minutes
Capacity: 1 class
Location: Frédéric Back Tree Pavilion and Arboretum
Dates: October 3 to 31 & May 15 to June 7
Schedule: 9:30 & 10:30 a.m., Wednesday to Friday
From May 15 to June 7, the activity will also be offered at 12:30 p.m.

[RESERVATIONS REQUIRED]

Activity sheet available on our website: espacepourelavie.ca/en/complementary-activities

OUR FRIENDS, THE BIRDS

Activity

See description, page 12
Dates: October 3 to 31 & May 15 to June 7

Planétarium Rio Tinto Alcan

NEW!

THE SECRETS OF GRAVITY

Show

Also offered for elementary cycles 2 and 3 and secondary

Why do things fall to the ground without magic?

The young magician's apprentice LIMBRADUR is far more interested in the Universe and its secrets than magic spells. He's fascinated by the stars, the Universe and the laws of nature. So, one night he sneaks into the Albert Einstein Museum, where he meets ALBY X3, a small, clever but rather quirky robot who knows all about Albert Einstein and his theories. ALBY takes LIMBRADUR on a magical journey of discovery through time and space, during which they not only uncover the secrets of gravity but also learn much about friendship and imagination. For LIMBRADUR and ALBY both have secrets of their own.

Length: 28 minutes
Dates: November 2 to June 21
Schedule: Contact our Group reservations department at 514 868-3000

Presented as a double feature with *Planet 9*

[RESERVATIONS REQUIRED]

NEW!

THE BLIND MAN WITH STARRY EYES

Show

See description, page 12
Dates: September 4 to June 21

NEW!

ABOARD THE SSE-4801

See description, page 12
Dates: September 4 to June 21

NEW!

COSMIC COLLISIONS

Show

See description, page 20
Dates: September 4 to May 2

ASTRO CAPSULES

Activity

See description, page 20
Dates: September 4 to June 21

EXO

Show

See description, page 23
Dates: September 4 to May 2

NEW!

PLANET 9

Show

See description, page 23
Dates: November 2 to June 21

EXO: OUR SEARCH FOR LIFE IN THE UNIVERSE

Exhibition

See description, page 23
Dates: September 4 to June 21

5TH ANNIVERSARY SPECIAL

AURÔRAE

Show

See description, page 25
Dates: September 4 to May 2

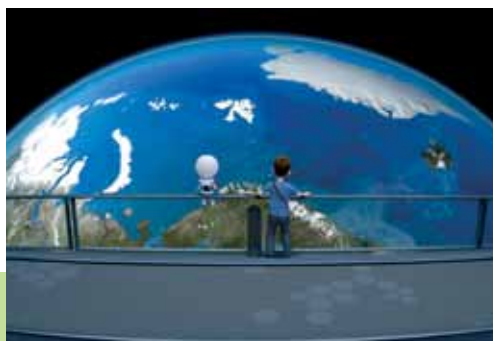
5TH ANNIVERSARY SPECIAL

CONTINUUM

Show

See description, page 25
Dates: September 4 to May 2

DON'T MISS THE
NEW PROGRAMMING AT
PLANÉTIARIUM RIO TINTO ALCAN
RIGHT HERE!



EXPERIMENT ON LIVING PLANTS

DISCOVER PLANTS' SUPER POWERS WITH YOUR STUDENTS

DID YOU KNOW THAT PLANTS TRANSPIRE? IT'S A NATURAL FUNCTION THAT LETS THEM KEEP ECOSYSTEMS HEALTHY

Here's a very simple experiment that will show your students one very useful consequence of plant transpiration. When plants transpire, they're like solar-powered pumps. By pumping water out of the ground to meet their needs, plants also absorb everything in the soil, including pollutants! We call that phytoextraction.

MATERIALS REQUIRED

- 2 NAPPA CABBAGE LEAVES
(COMMONLY CALLED CHINESE CABBAGE)
- 2 DRINKING GLASSES
- 1 MEASURING CUP
- 20 DROPS BLUE FOOD COLOURING
- 100 ml COOL WATER

CAREFUL!

FOOD COLOURING STAINS, SO SUGGEST THAT YOUR STUDENTS WEAR PLASTIC GLOVES AND AN APRON

1



Using the measuring cup, pour 50 ml of water into each glass. Then, ask your students to add 20 drops of blue food colouring to one of the two glasses.

2

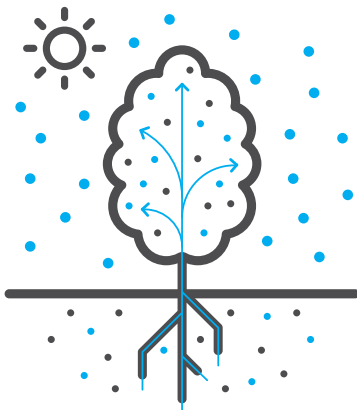


Ask your students to place one cabbage leaf in the glass with coloured water and one in the control glass with plain water.

3



Let the cabbage leaves sit for 2 or 3 hours and then you and your students can discover their amazing power!



WHAT HAPPENED?

You just witnessed the process of **transpiration**, one of the mechanisms essential to life. In nature, a plant absorbs the water and nutrients it needs through its roots. The nutritious liquid rises all the way to the leaves, which eliminate any excess water through transpiration. When the water or soil is polluted, some pollutants are absorbed and accumulated by the plant along with the nutrient-filled liquid. That's what the cabbage did with the blue food colour, imitating the way that pollutants move through a plant. Of course, we don't eat plants that grow on polluted sites... Instead, we dispose of them safely.

For more information, go to espacepouirlavie.ca/en/pathway-phytotechnologies.

Biodôme

NEW!

BECOME AN ECO-CITIZEN BY PROTECTING THE ST. LAWRENCE

In-class workshop

Also offered for elementary cycle 3

Becoming an eco-citizen means learning some important things before taking individual and collective action. Meet some fascinating marine species that live in the Gulf of St. Lawrence. Through an exploration activity, your students will observe this rich habitat and learn about the importance of preserving its precious biodiversity. They'll come up with solutions to the environmental problems facing this region, based on an eco-citizen approach. Then they'll be invited to pursue group efforts back at school.

Length: 75-minute in-class workshop

Capacity: two classes per school

Dates: Sept. 17 to October 26, February 4 to 22 & May 6 to June 7

Schedule: one class in the morning, the other in the afternoon

Cost: \$325 for 2 classes per school

Offered on Montréal Island only.

[RESERVATIONS REQUIRED]

NEW!

BIODIVERSITY IN YOUR NEIGHBOURHOOD

In-class workshop

Also offered for elementary cycle 3

Two of the Biodôme's nature interpreters will visit your class to raise students' awareness of the importance of biodiversity. Includes an outing in your school's neighbourhood, during which your students will learn to identify the different forms of life there.

IN FRENCH ONLY

Length: 2-hour in-class workshop

Capacity: two classes per school

Dates: Sept. 10 to October 12 & May 6 to 31

Schedule: one class in the morning, the other in the afternoon

Cost: \$325 for 2 classes per school

*Your school must have a green space nearby

Offered on Montréal Island only.

[RESERVATIONS REQUIRED]



Insectarium

POP CAPSULES

Activity

See description, page 10

Dates: September 4 to October 3 & November 1 to 4

SUPER INSECTS ON TOUR

Activity

See description, page 10

Dates: September 4 to October 3 & November 1 to 4

NATURALLY WELL MADE

Activity

See description, page 10

Dates: September 4 to October 3 & November 1 to 4

BUG BITES

BUTTERFLIES GO FREE

Activity

See description, page 10

Dates: February 21 to April 28

FOR HALLOWEEN



Don't miss our captivating presentations on spiders:

TRICKY SPIDERS HALLOWEEN STARS POP CAPSULES

Activities

See descriptions, page 10

Dates: October 4 to 31



Jardin botanique

FOR HALLOWEEN



POUAH! BÉBÉ-SORCIÈRE GREAT PUMPKIN BALL EXHIBITION ESMERALDA, THE FRIENDLY WITCH

Storytelling time – Exhibition – Activity
See descriptions, page 11

Dates: October 5 to 31

INSECT-EATING PLANTS

Activity

Insect-eating plants have developed fascinating ways of adapting. Handling, observing and comparing different plants will allow students to understand how these adaptations work.

The educator will make them aware of the importance of protecting the habitats of these vulnerable plants. The activity includes a guided tour of the greenhouses. Certain kinds of plants, such as carnivorous plants, have developed strategies to adapt to their environment... how's that for bioengineering!

Length: 90 minutes

Capacity: 2 classes

Location: Multipurpose rooms and greenhouses

Dates: March 13 to June 7

Schedule: 9:30 a.m. & 12:30 p.m.

[RESERVATIONS REQUIRED]



First Nations Garden

INTRODUCTION TO THE FIRST NATIONS



Activity

Enjoy a unique experience as you're carried off to the "land of peace" in the First Nations Garden. Gatherings are a central part of Native culture. First Nations peoples come together to celebrate bountiful harvests, births and reunions after long winters spent in the forest. Come celebrate in the heart of nature as you learn about past and present traditions among the First Nations!

Length: 60 minutes

Capacity: 1 class

Location: First Nations Garden

Dates: October 3 to 31

& May 15 to June 7

Schedule: 9:30 a.m. & 12:30 p.m.,
Wednesday to Friday

[RESERVATIONS REQUIRED]

COMBINED FORMAT

THE GREAT GATHERING

Combine
INTRODUCTION TO THE FIRST NATIONS
and
TREE QUIZ



Activities

The First Nations have always maintained close bonds with the forest. The Frédéric Back Tree Pavilion and the First Nations Garden team up to celebrate these natural relationships. Your day of discovery will include two activities: *Introduction to the First Nations* and the *Tree Quiz*. Both activities relate to the Science and Technology and Social Sciences programs. A fascinating day of science and culture combined with nature.

Length: 4 hours

Capacity: 2 classes

Location: First Nations Garden,
Arboretum and
Frédéric Back Tree Pavilion

Dates: May 15 to June 7

Schedule: 9:30 a.m. to 1:30 p.m.,
Wednesday to Friday

[RESERVATIONS REQUIRED]

Frédéric Back Tree Pavilion

Most activities take place indoors. For some activities, however, we may take the students outdoors into the Arboretum. So it's important for the children to be dressed appropriately for the weather (boots, raingear, gloves, etc.). That way everyone is sure to enjoy the outing.

COMBINE an educational activity of your choice with the complementary *Our Friends, the Birds* activity. Ask when you reserve.

TREE QUIZ

Activity

Also offered for elementary cycle 3

A game, puzzles and a race against the clock. A perfect opportunity to test what you know about trees. Which tree grows fastest? How can a ring help you tell the age of a tree? Can you think of an object made out of wood whose name begins with "Y"? Teamwork is the key to success!

Length: 60 minutes

Capacity: 1 class

Location: Frédéric Back Tree Pavilion

Dates: October 3 to 31

& May 15 to June 7

Schedule: 9:30 & 10:30 a.m.,
Wednesday to Friday
From May 15 to June 7,
the activity will also be
offered at 12:30 p.m.

[RESERVATIONS REQUIRED]

OUR FRIENDS, THE BIRDS

Activity

See description, page 12

Dates: October 3 to 31

& May 15 to June 7

Length: 60 minutes

TREE RALLY

Activity

See description, page 22

Dates: October 3 to 31

& May 15 to June 7

Length: 60 minutes



This symbol indicates an outdoor activity.

Planétarium Rio Tinto Alcan

NEW! COSMIC COLLISIONS

Show

Also offered for elementary cycles 1 and 3 and secondary

A radical change from our peaceful night sky, *Cosmic Collisions* presents the spectacular result of gravity pulling together planets, stars, and galaxies. These sometimes explosive encounters may have not only ended the age of the dinosaurs but also given birth to new stars, essential for life on Earth.

Cosmic Collisions will provide an extraordinary view of the forces - constructive or catastrophic - that continue to shape our Universe.

Length: 23 minutes

Dates: September 4 to May 2

Schedule: Contact our Group reservations department at 514 868-3000

Presented as a double feature with *EXO*

[RESERVATIONS REQUIRED]

ASTRO CAPSULES

Activity

Also offered for elementary cycles 1 and 3 and secondary

Come explore the solar system with a scientific interpreter who is passionate about astronomy. Discover the planets' characteristics, the phenomenal sizes of celestial objects and the astronomical distances between them! And why not take the opportunity to cook a little? Take part in an activity aiming to concoct... a comet recipe! Three different activities are offered in rotation all day long.

Length: 10 minutes

Location: The bleachers in the *EXO* exhibition

Dates: September 4 to June 21

Schedule: Contact our Group reservations department at 514 868-3000

[NO RESERVATIONS REQUIRED]

**DON'T MISS THE
NEW PROGRAMMING AT
PLANÉTARIUM RIO TINTO ALCAN
RIGHT HERE!**

NEW!

THE SECRETS OF GRAVITY

Show

See description, page 14

Dates: November 2 to June 21

NEW!

PLANET 9

Show

See description, page 23

Dates: November 2 to June 21

EXO

Show

See description, page 23

Dates: September 4 to May 2

EXO: OUR SEARCH FOR LIFE IN THE UNIVERSE

Exhibition

See description, page 23

Dates: September 4 to June 21

5TH ANNIVERSARY SPECIAL AURÖRAE

Show

See description, page 25

Dates: September 4 to May 2

5TH ANNIVERSARY SPECIAL CONTINUUM

Show

See description, page 25

Dates: September 4 to May 2



Biodôme

NEW!

BECOME AN ECO-CITIZEN BY PROTECTING THE ST. LAWRENCE

In-class workshop

Also offered for elementary cycle 2

Becoming an eco-citizen means learning some important things before taking individual and collective action. Meet some fascinating marine species that live in the Gulf of St. Lawrence. Through an exploration activity, your students will observe this rich habitat and learn about the importance of preserving its precious biodiversity. They'll come up with solutions to the environmental problems facing this region, based on an eco-citizen approach. Then they'll be invited to pursue group efforts back at school.

Length: 75-minute in-class workshop

Capacity: two classes per school

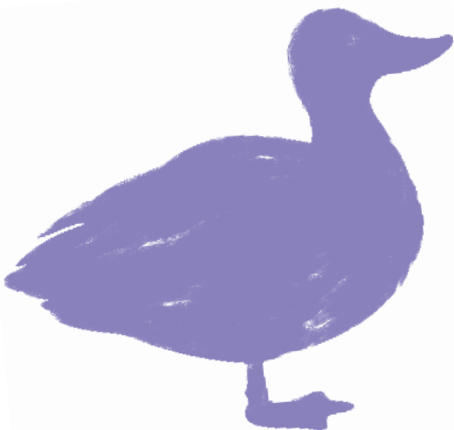
Dates: Sept. 17 to October 26, February 4 to 22 & May 6 to June 7

Schedule: one class in the morning, the other in the afternoon

Cost: \$325 for 2 classes per school

Offered on Montréal Island only.

[RESERVATIONS REQUIRED]



NEW!

BIODIVERSITY IN YOUR NEIGHBOURHOOD

In-class workshop

Also offered for elementary cycle 2

Two of the Biodôme's nature interpreters will visit your class to raise students' awareness of the importance of biodiversity. Includes an outing in your school's neighbourhood, during which your students will learn to identify the different forms of life there.

IN FRENCH ONLY

Length: 2-hour in-class workshop

Capacity: two classes per school

Dates: Sept. 10 to October 12 & May 6 to 31

Schedule: one class in the morning, the other in the afternoon

Cost: \$325 for 2 classes per school*

*Your school must have a green space nearby.

Offered on Montréal Island only.

[RESERVATIONS REQUIRED]

Insectarium

POP CAPSULES

Activity

See description, page 10

Dates: September 4 to October 3 & November 1 to 4

SUPER INSECTS ON TOUR

Activity

See description, page 10

Dates: September 4 to October 3 & November 1 to 4

NATURALLY WELL MADE

Activity

See description, page 10

Dates: September 4 to October 3 & November 1 to 4

BUG BITES

BUTTERFLIES GO FREE

Activity

See description, page 10

Dates: February 21 to April 28

FOR HALLOWEEN



Don't miss our captivating presentations on spiders:

TRICKY SPIDERS

HALLOWEEN STARS

POP CAPSULES

Activities

See descriptions, page 10

Dates: October 4 to 31



ELEMENTARY CYCLE 3 — Grades 5 & 6

Jardin botanique

FOR HALLOWEEN



GREAT PUMPKIN BALL EXHIBITION

Exhibition

See description, page 11

Dates: October 5 to 31

EXTREME COMBAT: LADYBUGS VS. APHIDS

Activity

Your students will act as research assistants and help out a scientific team as they conduct a biological control research project using insects. They'll observe insects to find out who will win the battle between ladybugs and aphids. They'll get some hands-on experience and learn to record scientific data.

Length: 90 minutes

Capacity: 2 classes

Location: Multipurpose rooms and greenhouses

Dates: March 13 to June 7

Schedule: 9:30 a.m. & 12:30 p.m.

[RESERVATIONS REQUIRED]



Frédéric Back Tree Pavilion

Most activities take place indoors. For some activities, however, we may take the students outdoors into the Arboretum. So it's important for the children to be dressed appropriately for the weather (boots, raingear, gloves, etc.). That way everyone is sure to enjoy the outing.

COMBINE an educational activity of your choice with the complementary *Our Friends, the Birds* activity. Ask when you reserve.

TREE RALLY

Activity

Also offered for elementary cycle 2

On your marks, get set, go! It's a hunt through the tree collection at the Jardin botanique. In the Arboretum, students will hunt for puzzles hidden in the trees and try to solve them. This race against the clock will let them run around as they learn about trees and sharpen their observation skills.

Length: 60 minutes

Capacity: 2 classes

Location: Arboretum

Dates: October 3 to 31 & May 15 to June 7

Schedule: 9:30 & 10:30 a.m., Wednesday to Friday
From May 15 to June 7, the activity will also be offered at 12:30 p.m.

[RESERVATIONS REQUIRED]



TREE QUIZ

Activity

Also offered for elementary cycle 2

A game, puzzles and a race against the clock. A perfect opportunity to test what you know about trees. Which tree grows fastest? How can a ring help you tell the age of a tree? Can you think of an object made out of wood whose name begins with "Y"? Teamwork is the key to success!

Length: 60 minutes

Capacity: 1 class

Location: Frédéric Back Tree Pavilion

Dates: October 3 to 31 & May 15 to June 7

Schedule: 9:30 & 10:30 a.m., Wednesday to Friday
From May 15 to June 7, the activity will also be offered at 12:30 p.m.

[RESERVATIONS REQUIRED]



This symbol indicates an outdoor activity.



Planétarium Rio Tinto Alcan

NEW! PLANET 9

Show
Also offered for elementary cycles 1 and 2 and secondary

Since Pluto was downgraded to a dwarf planet, this object on the outskirts of our solar system has continued to fascinate astronomers. The New Horizons probe flyby in 2015 revealed a world far more complex than anyone had expected and offered a new perspective on other objects near Pluto, in the Kuiper belt.

The study of these objects with such magical names – Eris, Sedna, Haumea and many more – suggests that there may be a new planet hidden beyond the Kuiper belt. Follow Mike Brown and his team of three fellow Californian astronomers as they search for this ninth planet!

Length: 27 minutes
Dates: November 2 to June 21
Schedule: Contact our Group reservations department at 514 868-3000

Presented as a double feature with *The Secrets of Gravity*

[RESERVATIONS REQUIRED]

EXO

Show
Also offered for elementary cycles 1 and 2 and secondary

Is there life elsewhere in the Universe? If we do find new civilizations out there, should we try to contact them? Scientific research into exobiology is flourishing, and thousands of planets outside our solar system are being located almost daily. *EXO* celebrates the uniqueness of life and consciousness in the Universe.

Length: 40 minutes
Dates: September 4 to May 2
Schedule: Contact our Group reservations department at 514 868-3000

Presented as a double feature with *Cosmic Collisions*

[RESERVATIONS REQUIRED]

EXO: OUR SEARCH FOR LIFE IN THE UNIVERSE

Exhibition • Self-guided tour
Also offered for elementary cycles 1 and 2 and secondary

How did life appear on Earth? Does life exist elsewhere in the Universe? The interactive digital exhibition *EXO: Our Search for Life in the Universe* invites you on an exciting journey through spectacular images and activities, projections and multimedia games!

Length: 20 to 45 minutes
Dates: September 4 to June 21
Schedule: 9 a.m. to 5 p.m.

[NO RESERVATIONS REQUIRED]

NEW! THE SECRETS OF GRAVITY

Show
See description, page 14
Dates: November 2 to June 21

NEW! COSMIC COLLISIONS

Show
See description, page 20
Dates: September 4 to May 2

ASTRO CAPSULES

Activity
See description, page 20
Dates: September 4 to June 21

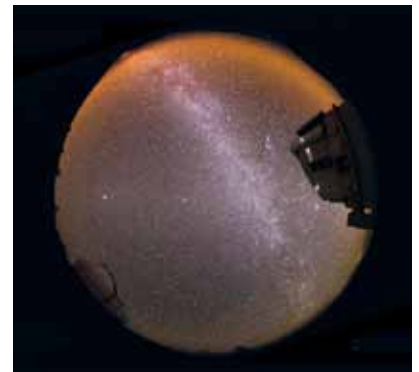
5TH ANNIVERSARY SPECIAL AURÖRAE

Show
See description, page 25
Dates: September 4 to May 2

5TH ANNIVERSARY SPECIAL CONTINUUM

Show
See description, page 25
Dates: September 4 to May 2

DON'T MISS THE
NEW PROGRAMMING AT
PLANÉTARIUM RIO TINTO ALCAN
RIGHT HERE!



Biodôme

THE FOREST BECKONS ME

Secondary cycle 1

Your students are invited to help preserve local biodiversity by taking part in a wild leek seeding project (target regions: Montérégie, Lanaudière, Lower Laurentians, Outaouais, Eastern Townships).

The program will take place over the course of **two consecutive years**:

Year 1: Spring 2019

You will have access to a series of preparatory activities (herbarium, map, etc.). You will need to reserve two days for them.

Step 1

Between February 1 and March 31

Your students will visit an Space for Life lab to determine whether their site* is suitable for growing wild leek. They will attend a workshop/lecture explaining the importance of biodiversity and the different careers they can investigate in the spring, during step 2: planting day in the maple stand.

** Your students will have collected a soil sample from a local sugar maple stand of their choice, the previous fall.*

Step 2

Between May 7 and 25

Sowing wild leek seeds. Your students will play the roles of biologists, forestry engineers, surveyors and reporters.

The Biodôme team will be on hand for both days during the first year.

Year 2: May 2020

You will need to reserve a half day for a field trip to see how the project is progressing. Your students will return to the site where they sowed their wild leek seeds, to examine the results. They will count the number of plants that have sprouted and send their results to the Biodôme. This is a chance for them to contribute to restoring this spring-time plant.

Capacity: a class of 35 students

For information, contact our Group reservations department at 514 868-3000

The closing of the Biodôme in 2019 has no impact on this activity.

[RESERVATIONS REQUIRED]



Insectarium

SUPER INSECTS ON TOUR

Activity

Also offered for preschool and elementary

Come meet some insect superheroes and give them a friendly "leg shake"!

Length: 20 minutes

Location: *We Are the Insects* exhibition

Dates: September 4 to October 3 & November 1 to 4

Schedule: 10 a.m., 1:30 & 4 p.m.

[NO RESERVATIONS REQUIRED]

POP CAPSULES

Activity

See description, page 10

Dates: September 4 to October 3 & November 1 to 4

NATURALLY WELL MADE

Activity

See description, page 10

Dates: September 4 to October 3 & November 1 to 4

BUG BITES

BUTTERFLIES GO FREE

Activity

See description, page 10

Dates: February 21 to April 28

FOR HALLOWEEN



Don't miss our captivating presentations on spiders:

TRICKY SPIDERS

HALLOWEEN STARS

POP CAPSULES

Activities

See descriptions, page 10

Dates: October 4 to 31



Jardin botanique

BIODIVERSITY ON OUR PLATES

Secondary cycle 1

Biodiversity is the basis of all food crops. It is essential for maintaining food security and ecosystems and respecting other cultures everywhere. With this activity combining science, geography and language arts, students will learn about the importance of tropical food diversity for humanity.

Length: 90 minutes
 Capacity: 1 classe
 Location: Multipurpose room
 Dates: March 13 to June 7
 Schedule: 9:30 a.m. & 12:30 p.m.

[RESERVATIONS REQUIRED]



Planétarium Rio Tinto Alcan

5TH ANNIVERSARY SPECIAL

AURŌRAE

Show
 Also offered for elementary cycles 1, 2 and 3

From Montréal to Yellowknife, from outer space to the Earth's core, *aurōrae* explains and transcends the wonderfully inspiring and electrifying aurora borealis, the Northern Lights. Guided by an enthusiastic expert, come delight in an exceptional immersive experience beneath the spectacular dome at the Planétarium Rio Tinto Alcan.

Length: 40 minutes
 Dates: September 4 to May 2
 Schedule: Contact our Group reservations department at 514 868-3000

Presented as a double feature with *Continuum*

[RESERVATIONS REQUIRED]

CONTINUUM

Show
 Also offered for elementary cycles 1, 2 and 3

From the infinitely small to the infinitely large, a cosmic poem on the connection between humankind and the Universe. A breathtaking show designed by a pair of internationally acclaimed Montréal artists, Michel Lemieux and Victor Pilon, set to the entrancing symphonic music of Philip Glass.

Length: 25 minutes
 Dates: September 4 to May 2
 Schedule: Contact our Group reservations department at 514 868-3000

Presented as a double feature with *aurōrae*

[RESERVATIONS REQUIRED]

NEW! THE SECRETS OF GRAVITY

Show
 See description, page 14
 Dates: November 2 to June 21

NEW! COSMIC COLLISIONS

Show
 See description, page 20
 Dates: September 4 to May 2

ASTRO CAPSULES

Activity
 See description, page 20
 Dates: September 4 to June 21

NEW! PLANET 9

Show
 See description, page 23
 Dates: November 2 to June 21

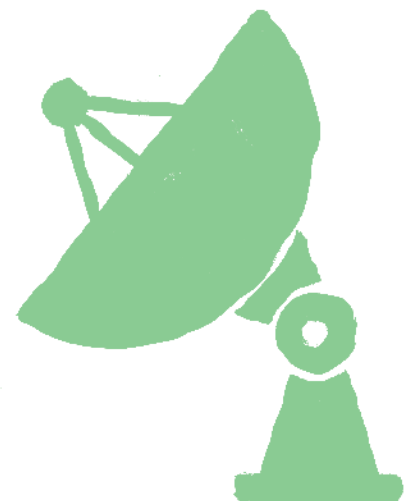
EXO

Show
 See description, page 23
 Dates: September 4 to May 2

EXO: OUR SEARCH FOR LIFE IN THE UNIVERSE

Exhibition
 See description, page 23
 Dates: September 4 to June 21

DON'T MISS THE
**NEW PROGRAMMING AT
 PLANÉTARIUM RIO TINTO ALCAN
 RIGHT HERE!**



SPECIALIZED ACTIVITIES

Biodôme

TEACHER TRAINING

Elementary teachers and student teachers

Interested in learning more about how animals adapt and interact with each other and their ecosystems? What is climate change? And do you really know what biodiversity is and how to protect it? By the end of the day, you'll know just what an individual or class can do to protect the environment.

IN FRENCH ONLY

Length: 6.5 hours

Capacity: 60 people (maximum)

Location: Planétarium Rio Tinto Alcan

Dates: Dates to be determined (a private group can be arranged if there are more than 8 people)

Schedule: 9 a.m. to 3:30 p.m.

Cost: Free

Training is offered while the Biodôme is closed.

[RESERVATIONS REQUIRED]

Jardin botanique

THE VEGETABLE GARDEN REVISITED

Activity

Students with intellectual disabilities Also offered for grade 1

In this workshop, students will get a close-up look at a plant from the vegetable garden.

As they examine vegetable plants, they'll discover that broccoli is a flower and that they eat roots, themselves! A look at composting and microgreens will help them become urban gardeners. A guided tour of the greenhouses rounds out this activity. The secrets of vanilla, chocolate, chewing gum and many other foods will be revealed. Discover some roots - in the air - and a bark that's used to flavour pastries! All are certain to pique children's curiosity.

Length: 90 minutes

Capacity: 2 classes

Location: Multipurpose rooms and greenhouses

Dates: March 13 to June 7

Schedule: 9:30 a.m. & 12:30 p.m.

[RESERVATIONS REQUIRED]

USING ALL YOUR SENSES TO DISCOVER PLANTS

Activity

Offered for students with intellectual disabilities and reception classes and kindergarten

See description, page 12

Dates: March 13 to June 7

Frédéric Back Tree Pavilion

TREES UP CLOSE

Activity

Reception classes, groups with students with learning difficulties or mild intellectual disabilities Also offered for elementary cycle 1

See description, page 14

Dates: October 3 to 31

& May 15 to June 7

From May 15 to June 7, the activity will also be offered at 12:30 p.m.

OUR FRIENDS, THE BIRDS

Activity

Reception classes and groups with students with learning difficulties or mild intellectual disabilities Also offered for preschool, kindergarten and elementary cycles 1 and 2

Your students will head off in teams in search of bird beaks and feet and to discover some surprising adaptations, play birdsong bingo and learn to recognize a black-capped chickadee's call. They'll have a great time with all these observation, demonstration and hands-on activities that will turn them into budding ornithologists!

Length: 45 minutes

Capacity: 1 class

Location: Frédéric Back Tree Pavilion

Dates: October 3 to 31

& May 15 to June 7

Schedule: 9:30 & 10:30 a.m.,

Wednesday to Friday

From May 15 to June 7,

the activity will also be offered at 12:30 p.m.

[RESERVATIONS REQUIRED]



Space for Life

CHECK OUT OUR WEBSITE
montrealspaceforlife.ca

ENRICHMENT ACTIVITIES

Teachers and students will find all sorts of games and documents on-line. There are classroom activities to help prepare for a trip to Space for Life or follow up afterward and expand on what your students learned during their visit.

espacepurlavie.ca/en/complementary-activities

Biodôme

PLANT AND ANIMAL FACT SHEETS

Do your students have research to do for a natural science project? They can consult the fact sheets on the Biodôme's animals and plants online.

espacepurlavie.ca/en/fauna-and-flora-biodome

Jardin botanique

TREES INSIDE OUT

Visit the *Trees Inside Out* virtual exhibition and discover a goldmine of information on trees, their environment, how they grow and the research being done on them.

aucoeurdelarbre.ca/en/

See the fact sheets:
aucoeurdelarbre.ca/en/branching-out/teachers/

A TREE IS A LIVING BEING!

Jardin botanique Arboretum Interpretation trail

Did you know trees make their own food? That they reproduce with the help of insects, birds and the wind? That they don't heal their wounds but seal them off them for the rest of their lives? The new interpretation stations now installed in the Arboretum hold many more fascinating secrets. Until you can discover them for yourself, check out the fact sheets on our website.

espacepurlavie.ca/en/complementary-activities/tree-living-being-fact-sheets

Insectarium

EXPLORATION RALLY

Join Prosc0 and explore the exhibition at the Insectarium, *We Are the Insects*. You'll have lots of fun together!

Cycle 1

Prosc0 puts on a party!

Our mascot, Prosc0, is preparing a huge celebration for his friends the insects and needs your help to make everything perfect! Take a look around the Insectarium and find the things his guests would love.

Download the rally descriptions and pre-visit and follow-up activities, and print them before you come!

espacepurlavie.ca/en/complementary-activities/prosc0-throws-party-cycle-1

Cycles 2 and 3

Prosc0 investigates

It's a mystery! There's an assassin hiding in the Insectarium. Join Prosc0 and track him down. To find the guilty insect, you'll have to analyze the crime scene and look for clues in the exhibition. We're sure you'll be able to identify the guilty party pretty quickly.

Download the activity sheets for cycles 2 and 3 before you come!

espacepurlavie.ca/en/complementary-activities/prosc0-investigates-cycle-2-3

BUTTERFLIES GO FREE: STUDENTS IN ACTION

Preschool and elementary

Everyone loves butterflies! To help prepare for or wrap up your visit to *Butterflies Go Free*, there are all sorts of fun classroom activities available on our website. Let the butterflies work their own special magic on you and your students!

espacepurlavie.ca/en/educational-activities/bug-bites-butterflies-go-free

MISSION MONARCH

Elementary cycles 2 and 3

You and your students can participate in a citizen science project aimed at protecting monarch butterflies. By taking part in this project, your students will learn more about these butterflies. Do you accept the mission? The new teacher's kit is available at mission-monarch.org

CLASSROOM TOOLS

To learn more about monarch butterflies

MONARQUE SANS FRONTIÈRE GAME

Elementary cycle 3 and secondary 1

The monarch butterflies are flying off to Mexico! Follow them and share their adventures through this exciting board game, which comes with suggested activities and five insect cards describing monarchs' lives. IN FRENCH ONLY

Cost: \$10

Information and orders: 514 872-7097

A MONARCH'S LIFE POSTER

For all grades

This colourful poster describes the stages in the monarch butterfly's life cycle.

Cost: \$5

Information and orders: 514 872-7097

ACTIVITY SHEETS

All levels

Consult our activity sheets to learn more about insects and other arthropods and how to observe, raise and collect them.

espacepurlavie.ca/en/insects-and-other-arthropods



RESERVATION CONDITIONS

STUDENT SUPERVISION AND GROUP SIZE

Educational activities are designed on the assumption that the teacher and accompanying adults will stay with students throughout the tour and participate. We recommend that you plan to have accompanying adults in the following ratios:

- One per five students, for preschool and elementary cycle 1
- One per ten students, for elementary cycles 2 and 3 and secondary



2019 GROUP RATES

Means of payment

Payment may be made by certified cheque, school cheque, cash, credit card or debit card. Make cheques payable to the “Ville de Montréal,” unless otherwise indicated when you reserve.

Rates

The 2019 rates listed below are in Canadian funds and include all taxes. Rates are subject to change without notice.

Unless otherwise indicated, there is no additional charge for educational activities.

Free admission for teachers

Teachers wishing to familiarize themselves with any of the institutions before they come with their classes may ask for one free pass when they reserve.

	BIODÔME	JARDIN BOTANIQUE INSECTARIUM CLOSED	PLANÉTIARIUM RIO TINTO ALCAN	2 SITE PACKAGE Jardin botanique + Planétarium Rio Tinto Alcan
GROUP RATES*				
Adults	Special in-class activities \$325/2 classes	\$14	\$14	\$24.75
Ages 5 to 17		\$7	\$7	\$12.50
Ages 0 to 4**		Free	Free	Free
Length of self-guided tour	The Biodôme is getting a makeover Reopening in December 2019	Greenhouses: 30 min to 1 hour Outdoor gardens: 1 to 4 hours	Minimum 2 hours	Minimum 2.5 hours

To add the Montréal Tower, please call 514 252-4737.

*Group rates apply to groups of 15 paying visitors or more. Individual rates are available on request.

**For groups of ages 0-4, a \$3/child fee may be charged for the use of specific services.

Free admission: One complimentary ticket for the bus driver, one for the class teacher and one complimentary ticket for each group of 20 paying visitors (21st visitor free). These tickets are not transferable.

RESERVATION FORM

School Groups



SPACE IS LIMITED! PLEASE RESERVE EARLY!

Please complete this form and e-mail it to us at reservationsespacepouurlavie@ville.montreal.qc.ca or fax it to 514 872-5476.

This form is also available on our website, at montrealspaceforlife.ca/reservations

For more information, contact the Reservations Department at 514 868-3000 Sunday to Thursday from 8:30 a.m. to 5 p.m., Friday and Saturday from 8:30 a.m. to 7 p.m.

IMPORTANT: Please remember that your visit has not been reserved until you have received your confirmation letter. You should receive the letter within five working days.

For packages including the Montréal Tower, please call 514 252-4737.

THE BIODÔME IS GETTING A MAKEOVER

REOPENING IN
DECEMBER 2019

THE INSECTARIUM IS PREPARING A METAMORPHOSIS

REOPENING IN 2021

Contact name: _____ Title: _____

Name of school / preschool / daycare: _____

Group name: _____

Address: _____ E-mail: _____

City/Town: _____ Telephone: _____

Postal code: _____ Fax: _____

I would like to receive the *School Newsletter*

RESERVATION REQUESTED DATE OF VISIT: _____ ARRIVAL TIME: _____

JARDIN BOTANIQUE **BIODÔME** **PLANÉTIARIUM RIO TINTO ALCAN**

Teachers wishing to familiarize themselves with any of the institutions before they come with their classes may ask for one free pass when they reserve.

RESERVATION DETAILS

Activity requested (if any):

	No. of adults	No. of children ages 5-17	No. of children ages 0-4	Cycle	NAME OF ACTIVITY	DATES day/month/year	TIME
Class 1					1 st choice		
Class 2					2 nd choice		
Class 3					3 rd choice		
Class 4							
Total							

MEALS* Lunch times are scheduled depending on room availability. Please check your confirmation letter.

JARDIN BOTANIQUE 11 a.m. 11:45 a.m. 12:30 p.m. 1:15 p.m.

PLANÉTIARIUM RIO TINTO ALCAN According to show schedule

*For groups of ages 0-4, a \$3/child fee may be charged for the use of specific services.

SPECIAL REQUESTS AND COMMENTS




GENERAL INFORMATION

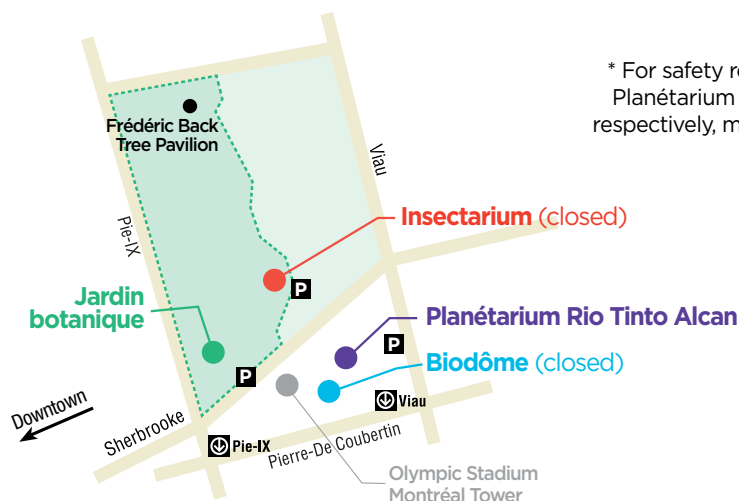
THE BIODÔME IS GETTING A MAKEOVER. BACK IN DECEMBER 2019

INSECTARIUM CLOSED

JARDIN BOTANIQUE

PLANÉTIARIUM RIO TINTO ALCAN

ADDRESS	4581 rue Sherbrooke Est Montréal, Quebec H1X 2B2	4101 rue Sherbrooke Est Montréal, Quebec H1X 2B2	4801 av. Pierre-De Coubertin Montréal, Quebec H1V 3V4
INFORMATION AND HOURS FOR GROUP RESERVATIONS	Phone: 514 868-3000 / Fax: 514 872-4917 E-mail: reservationespacevie@ville.montreal.qc.ca Daily except December 24 and 25 Sunday to Thursday from 8:30 a.m. to 5 p.m. (8 p.m. from September 7 to October 31) Friday and Saturday from 8:30 a.m. to 7 p.m. (9 p.m. from September 7 to October 31)		Phone: 514 868-3000 Fax: 514 872-5476 E-mail: reservationespacevie@ville.montreal.qc.ca
HOURS FOR THE MUSEUMS	Tuesday to Sunday from November 1 to May 15, 9 a.m. to 5 p.m. Daily the rest of the year (until 9 p.m. in fall) From June 22 to September 1, hours extended from 9 a.m. to 7 p.m., Thursday to Saturday		Open Tuesday to Sunday from September 10 to June 18 and every day the rest of the year. For opening and show times, check montrealspaceforlife.ca or call 514 868-3000.
ACCESS	 Pie-IX or Viau station Free parking for buses at 4581 Sherbrooke Est, at the Maisonneuve Park entrance	 Pie-IX station Free parking for buses at 4101 Sherbrooke Est. For the Frédéric Back Tree Pavilion at 4500 Rosemont Blvd. (at 29 ^e avenue)	 Viau station Free parking for buses at 3000 and 3200 Viau
RECEPTION*	School groups will be met at the gate or in the Insectarium lobby 15 minutes before the activity starts.	Depending on the activity, groups will be met at the Reception Centre or the Frédéric Back Tree Pavilion 15 minutes before it starts.	Groups will be met at the ticket counter near the Planétarium Rio Tinto Alcan entrance (bus access via the parking lot at 3200 rue Viau).
CLOAKROOM	Available by reservation (free). Limited space available.		
LUNCH ROOM	The lunch room is available by reservation. Jardin botanique: 80 seats Frédéric Back Tree Pavilion: 60 seats (picnic tables) Planétarium Rio Tinto Alcan: 60 seats (Tuesday to Thursday) Insectarium: No lunch room No reservations are required for the Maisonneuve Park chalet.		



* For safety reasons, the Jardin botanique auditorium and the Planétarium Rio Tinto Alcan theatres cannot accommodate, respectively, more than four and three wheelchairs at one time.

CANADA'S LARGEST NATURAL SCIENCE MUSEUM COMPLEX

